



MSLC-2™ Master Synchronizer and Load Control

DESCRIPTION

Woodward's MSLC-2™ functions with the DSLC-2™ control to provide synchronization and load control across Utility and Intertie breakers. The MSLC-2/DSL-2 combination operates over an Ethernet communication network to control simple or complex generator system applications. This combination, 32 DSLC-2's and 16 MSLC-2's, provide multiple unit, multiple segment, utility and intertie power management for complex power systems. Controls plant wide Import / Export levels while always providing bump-less load transfers with utility.

The MSLC-2 control combines synchronization, dead bus closing, utility/intertie load sensor, base-load control, import/export control, VAR, power factor, and a master process control in one powerful package.

The MSLC-2 provides phase matching or slip frequency synchronization, with voltage matching, across a utility or intertie breaker. The MSLC-2/DSL-2 combination can handle multiple utility connections with a maximum of 8 bus segments in one application.

The MSLC-2's load sensor and load control sense true RMS power and provide a bump-less loading and unloading against a utility grid. Baseload, import/export, process, and utility unload modes control the KW power between different power sources at the same time controlling the reactive power, VAR and power factor. Reactive power is also ramped on and off for the smoothest load transactions between power grids.

The MSLC-2 communicates via Ethernet, with redundant Ethernet now available, to control real and reactive loading against the utility by DSLC-2 equipped generators.

The tie breaker mode allows synchronization between multiple generator systems. Segments are connected and power can be measured across an intertie, but no load control is functional when in Tie breaker operation.

FEATURES

- One MSLC-2 can provide master control for up to 32 DSLC and an additional 15 MSLC-2 in a system.
- Two dedicated Ethernet lines for precise system communications between all DSLC-2's and MSLC-2's on the system.
- Ethernet Modbus TCP for remote control and monitoring by PLC or DCS system.
- Redundant Ethernet communications for enhanced reliability.
- Master MSLC-2 redundancy, loss of communications with the designated MSLC-2 master initiates control hand off to the next designated MSLC-2 master.
- The MSLC-2 hardware is adjustable for multiple applications.
- Slip frequency or voltage phase matching synchronizing fully selectable with dead bus option in both directions provide full flexibility for intertie and main-tie-main applications.
- Having functions integrated into one box eliminates the need for redundant sensors (like PTs, CTs, and MOPs) that connect to individual modules such as the load sensor and synchronizer.
- Digital signal processing makes the MSLC-2 resistant to power line distortions and harmonics.
- Three-phase true RMS power sensing provides accurate readings even with unbalanced phase loading and voltage fluctuations.
- Export/import control over multiple utility MSLC-2's in same segment.
- The Woodward ToolKit™ software allows flexible setup using the same basic menu tree as the original MSLC plus an overview screen. No hand held programmer is required. Graphical overview of generators and bus bar parameters with trending makes the MSLC-2 commissioning friendly.
- The Toolkit can be accessed either via one of the Ethernet ports or via RS-232 port.
- Phase angle compensation provides adjustment for additional deviation correction across a transformer.
- The system update feature allows for system reconfiguration.

- Applications for up to 32 generators with 16 mains and/or tie breakers
- Configurable for mains and tie breaker applications
- Complex applications with up to 8 bus segments
- Automatic segment recognition
- Redundant Ethernet communication for enhanced reliability
- The “system update” feature allows for system reconfiguration
- PLC and DCS compatible via Modbus RTU or Modbus TCP
- Automatic plant loading and unloading for bump-less load transfer to and from the utility
- Controls plant wide import/export levels against the utility
- Overall plant Power Factor control
- Ethernet or RS-232 port for configuration of device using Woodward ToolKit software
- UL/cUL & CE Listed

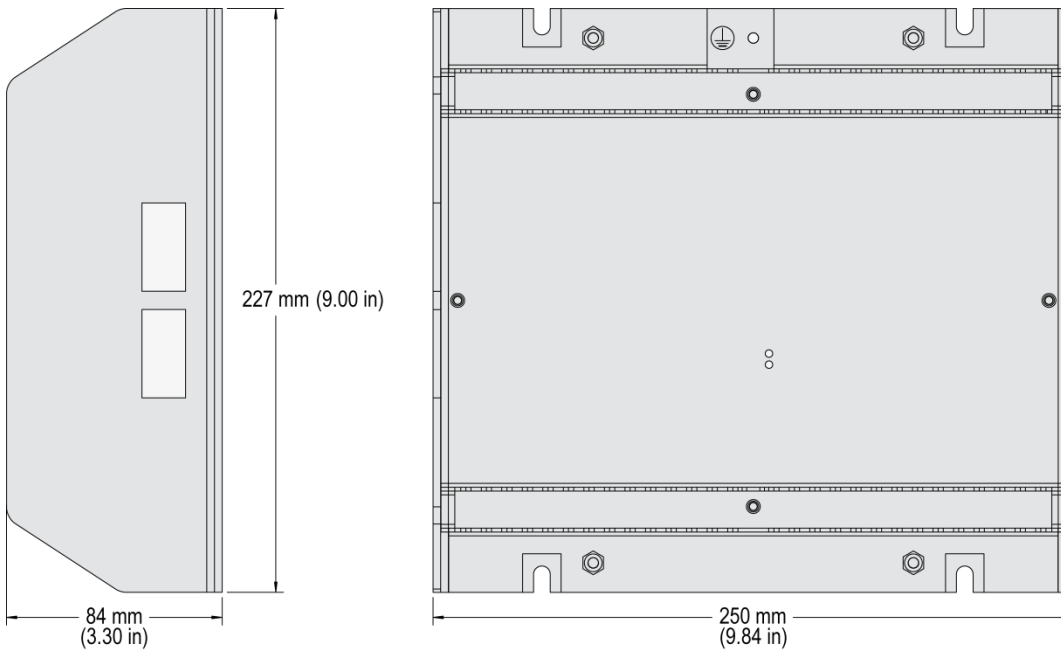
SPECIFICATIONS

Power supply 12/24 Vdc (8 to 40 Vdc)
 Intrinsic consumption max. 15 W
 Ambient temperature (operation) -40°C to 70°C / -40 to 158°F
 Ambient temperature (storage) -40°C to 85°C / -40 to 185°F
 Ambient humidity 95 %, non-condensing
Voltage (Δ/Δ)
 120 Vac [1] Rated (V_{rated}) 69/120 Vac
 Max. value (V_{max}) 86/150 Vac
 Rated voltage phase - ground 150 Vac
 Rated surge volt. (V_{surge}) 2.5 kV
and 480 Vac [4] Rated (V_{rated}) 277/480 Vac
 Max. value (V_{max}) 346/600 Vac
 Rated voltage phase - ground 300 Vac
 Rated surge volt. (V_{surge}) 4.0 kV
 Accuracy Class 0.5
 Measurable alternator windings 3p-3w, 3p-4w, 3p-4w OD
 Setting range primary 50 to 650,000 Vac
 Linear measuring range 1.25× V_{rated}
 Measuring frequency 50/60 Hz (40 to 85 Hz)
 High Impedance Input; Resistance per path [1] 0.498 MΩ, [4] 2.0 MΩ
 Max. power consumption per path < 0.15 W
Current (galvanically isolated) Rated (I_{rated}) [1] ..1 A or [5] ..15 A
 Linear measuring range $I_{gen} = 3.0 \times I_{rated}$
 $I_{mains/ground} = 1.5 \times I_{rated}$
 Setting range 1 to 32,000 A
 Burden < 0.15 VA
 Rated short-time current (1 s) [1] 50× I_{rated} , [5] 10× I_{rated}
 Accuracy Class 0.5

Power

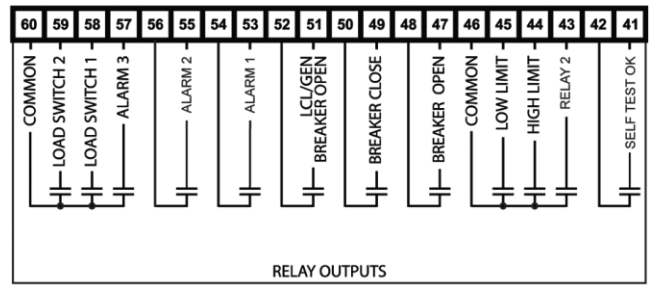
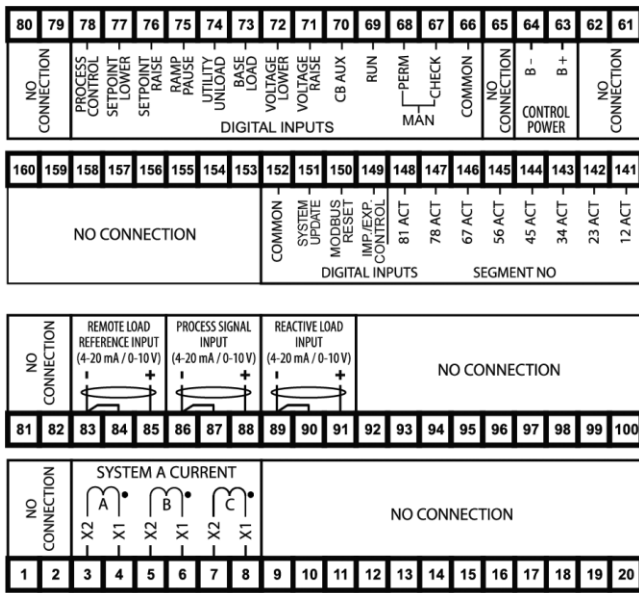
DIMENSIONS

Powder coated aluminum for back panel mounting

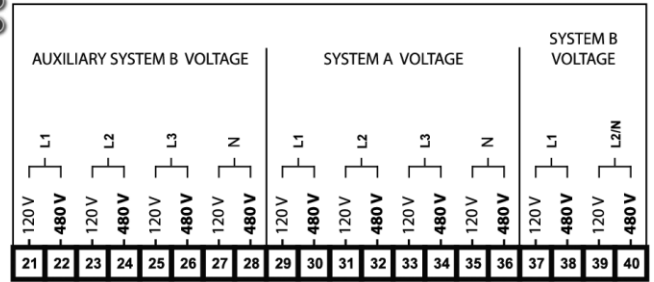


Setting range 0.0 to 999,999.9 MW/kvar
Discrete inputs galvanically isolated
 Input range 12/24 Vdc (8 to 40 Vdc)
 Input resistance approx. 20 kOhms
Relay outputs galvanically isolated / potential free
 Contact material AgCdO
 Load (GP) 2.00 Aac@250 Vac
 2.00 Adc@24 Vdc / 0.36 Adc@125 Vdc / 0.18 Adc@250 Vdc
 Pilot duty (PD)
 1.00 Adc@24 Vdc / 0.22 Adc@125 Vdc / 0.10 Adc@250 Vdc
Analog inputs (not isolated) freely scalable
 Type 0 to 10 V / 0 to 20 mA
 Resolution 11 Bit
Housing Powder coated aluminum for back panel mounting
 Dimensions WxHxD 250 × 227 × 84 mm (9.84 × 9.00 × 3.30 in)
 Connection screw/plug terminals 2.5 mm²
 Protection system IP 20
 Weight approx. 1,900 g (4.2 lbs)
Disturbance test (CE) tested according to applicable EN guidelines
Listings UL, cUL, GOST-R, CSA
Marine LR (Type Approval), ABS (Type Approval)

TERMINAL DIAGRAM

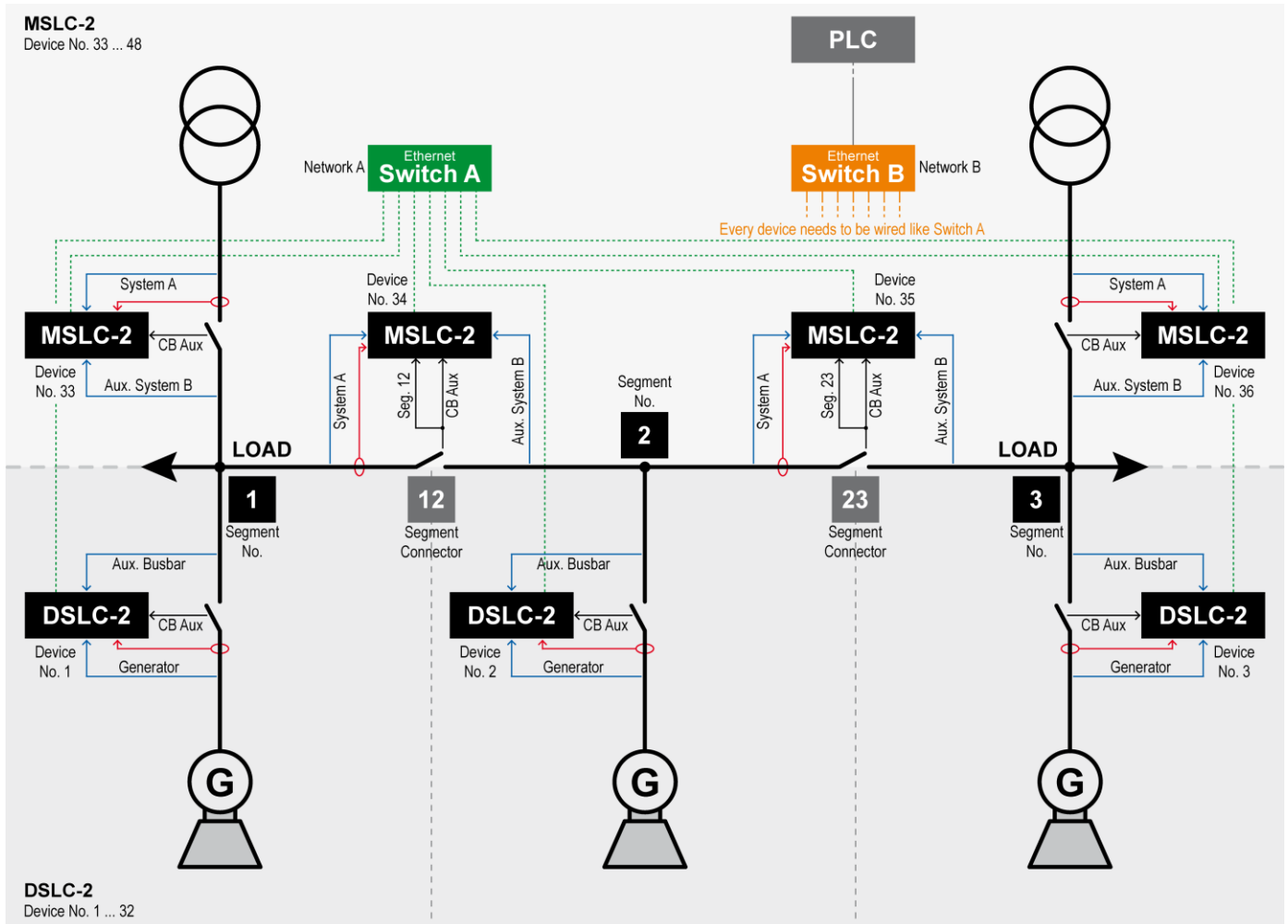


CPU OK
SYNC
ENABLE



MSLC-2 – terminal diagram

TYPICAL CONFIGURATION



CONTACT

North & Central America

Tel.: +1 970 962 7331
 SalesPGD_NAandCA@woodward.com

South America

Tel.: +55 19 3708 4800
 SalesPGD_SA@woodward.com

Europe

Tel. Stuttgart: +49 711 78954 510
 Tel. Kempen: +49 2152 145 331
 SalesPGD_EUROPE@woodward.com

Middle East & Africa

Tel.: +971 2 6275185
 SalesPGD_MEA@woodward.com

Russia

Tel.: +7 812 319 3007
 SalesPGD_RUSSIA@woodward.com

China

Tel.: +86 512 8818 5515
 SalesPGD_CHINA@woodward.com

India

Tel.: +91 124 4399 500
 SalesPGD_INDIA@woodward.com

ASEAN & Oceania

Tel.: +49 711 78954 510
 SalesPGD_ASEAN@woodward.com

www.woodward.com

Subject to alterations, errors excepted.
 Subject to technical modifications.

This document is distributed for informational purposes only. It is not to be construed as creating or becoming part of any Woodward Company contractual or warranty obligation unless expressly stated in a written sales contract.

We appreciate your comments about the content of our publications. Please send comments including the document number below to stgt-doc@woodward.com

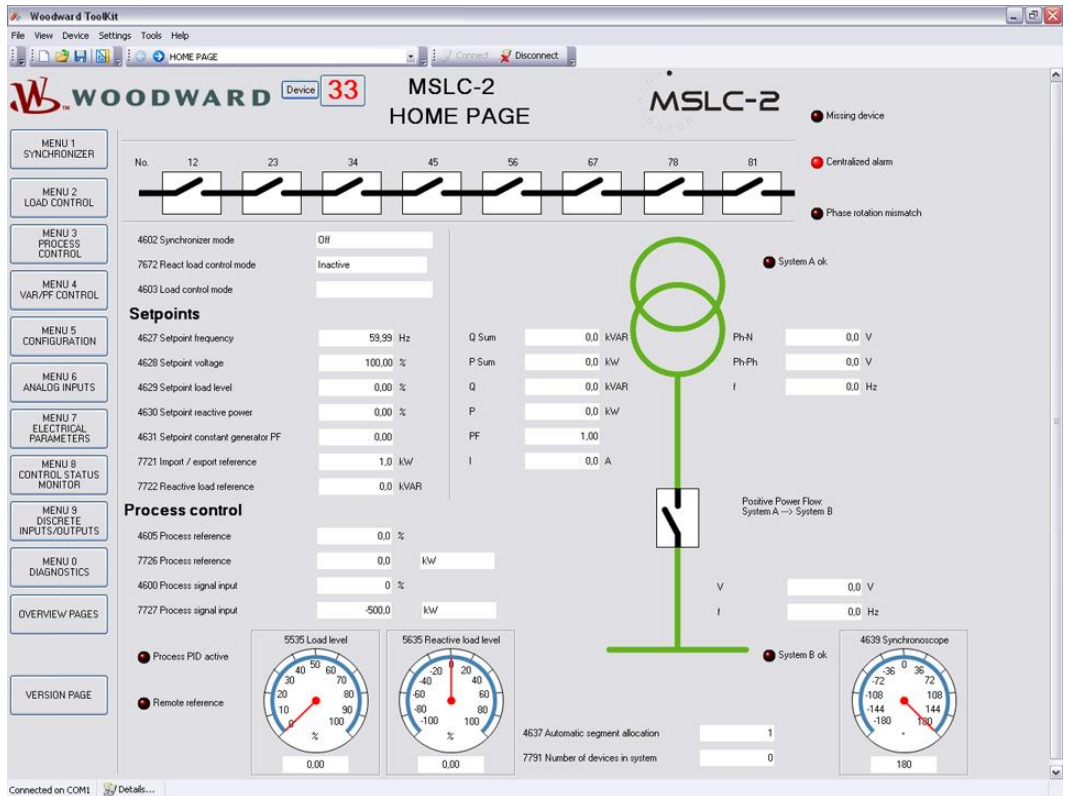
© Woodward
 All Rights Reserved

For more information contact:

TOOLKIT CONFIGURATION SOFTWARE

Woodward's ToolKit provides user friendly configuration, commissioning assistance, displays all operating modes, and the overview pages show what other controls the MSLC-2 is communicating with. The MSLC-2 Home Page is shown below.

Note: The menu tree illustrated on the left side is similar to the original MSLC structure.



FEATURES OVERVIEW

	MSLC-2	DSLCL-2
I/Os		
Discrete inputs	23	23
Relay outputs	12	12
Analog inputs	3	3
Analog outputs	-	2
RS-232 Interface	1	1
RS-485 Interface	1	1
Ethernet Interfaces (10/100 Mbit/s)	2	2
LED 1 "CPU OK"	Off / not ready / ready / system update active	Off / not ready / ready / system update active
LED 2 "Sync Enable"	Off / ready / not OK	Off / ready / not OK
Listings/Approvals		
UL / cUL Listing	✓	✓
GOST-R & CSA	✓	✓
LR & ABS Marine	✓	✓
CE Marked	✓	✓

PART NUMBERS

MSLC-2		DSLCL-2	
1A CT inputs P/N 8440-1977	5A CT inputs P/N 8440-1877	1A CT inputs P/N 8440-1978	5A CT inputs P/N 8440-1878
Accessories			
Spare connector kit - P/N 8923-1806			